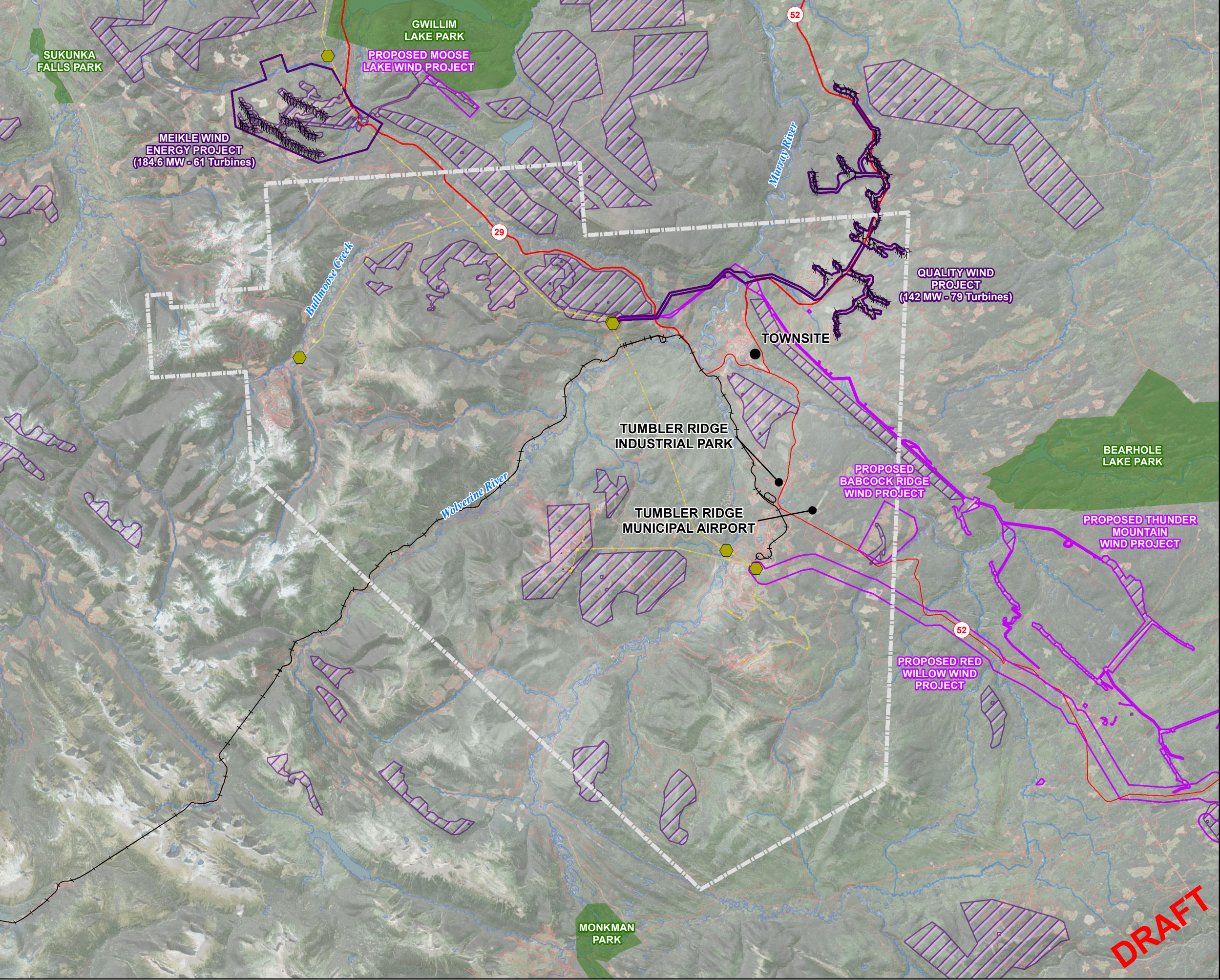


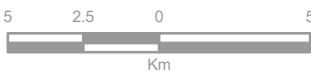
U:\Projects_KAM\0642003218\0-Design\GIS\Projects\MXD\Wind Resources.mxd Last updated by CRempel on Thursday, October 11, 2018 at 10:51:05 AM



District of Tumbler Ridge
Wind Resources

- Tumbler Ridge Municipal Boundary
- Provincial Park/Protected Area
- Existing Wind Projects
- Proposed Wind Projects
- Existing Wind Tenures
- Existing Electrical Transmission Line (230 kV)
- Substation (Approximate Location)
- Highway
- Local/Rural Resource Roads
- Railways
- Wind Turbine

The accuracy & completeness of information shown on this drawing is not guaranteed. It will be the responsibility of the user of the information shown on this drawing to locate & establish the precise location of all existing information whether shown or not.



Coordinate System: NAD 1983 CSRS BC Environment Albers
Scale: 1:250,000

Data Sources:
Roads, provincial park, and wind tenures provided by Land and Resource Data Warehouse, October 2018.
Background hillshade and water features provided by ESRI, 2006.
Imagery provided by ESRI Basemaps.

Project #: 0642.0032.18
Author: CR
Checked:
Status:
Revision: A
Date: 2018 / 10 / 11

FIGURE 1

DRAFT